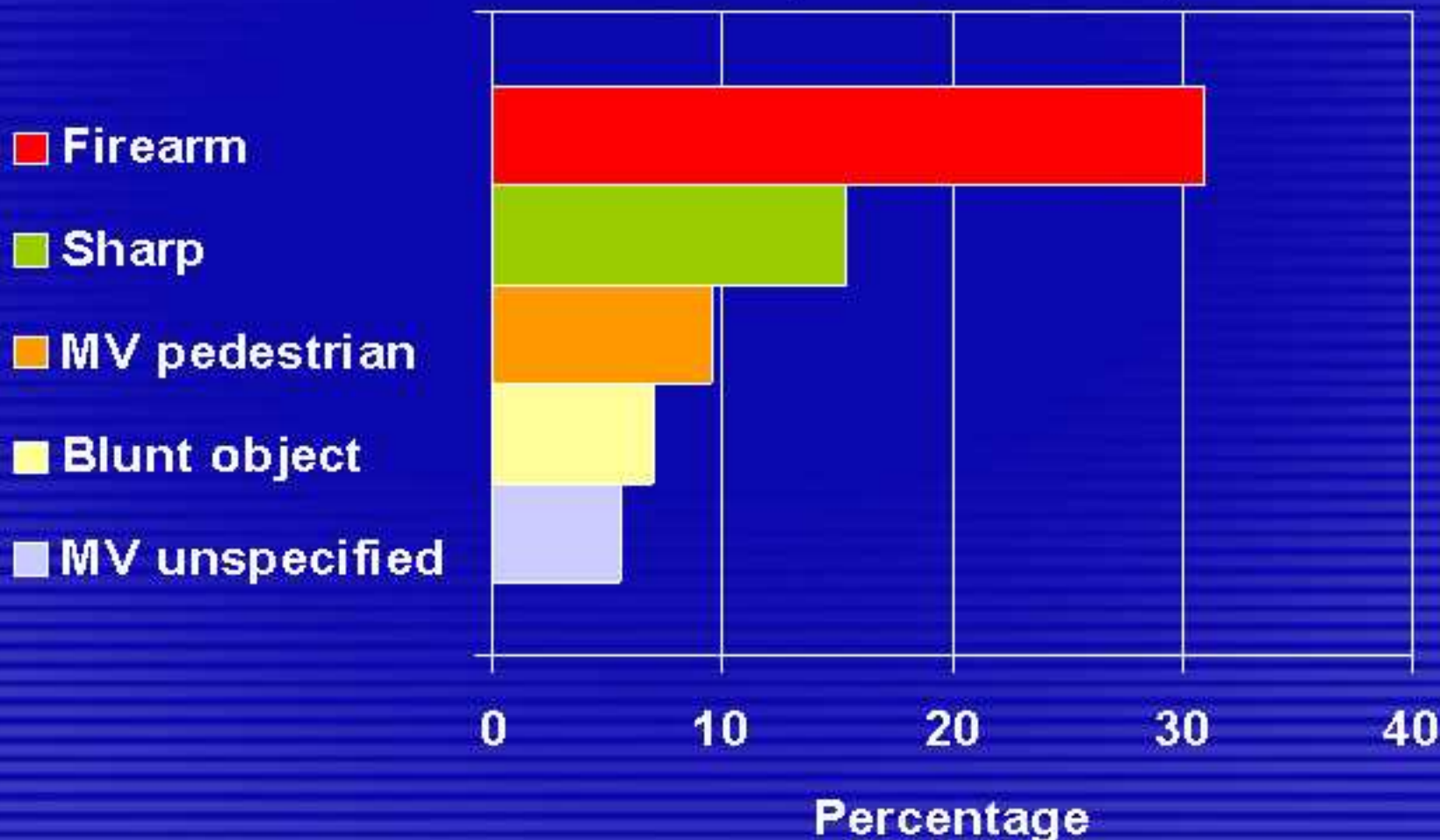
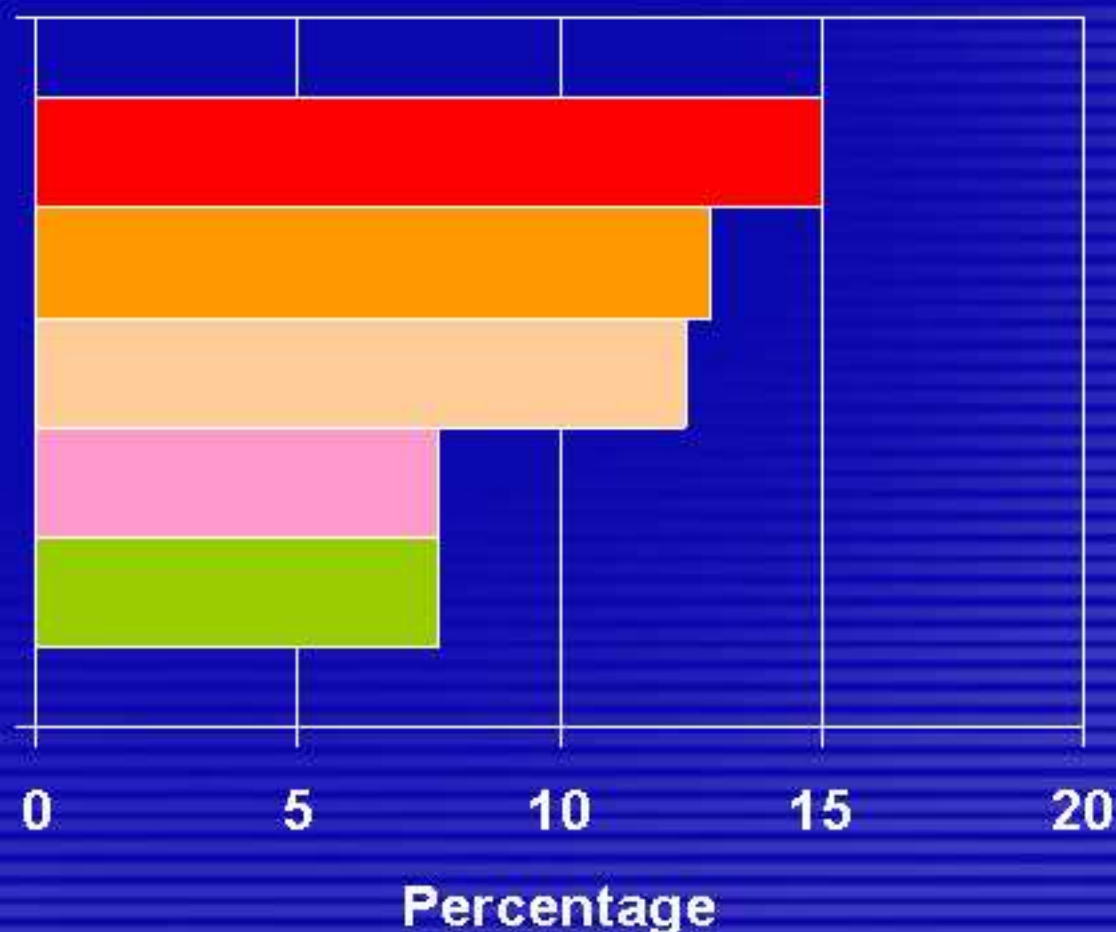


# Top five external causes of death for males (n=14971)

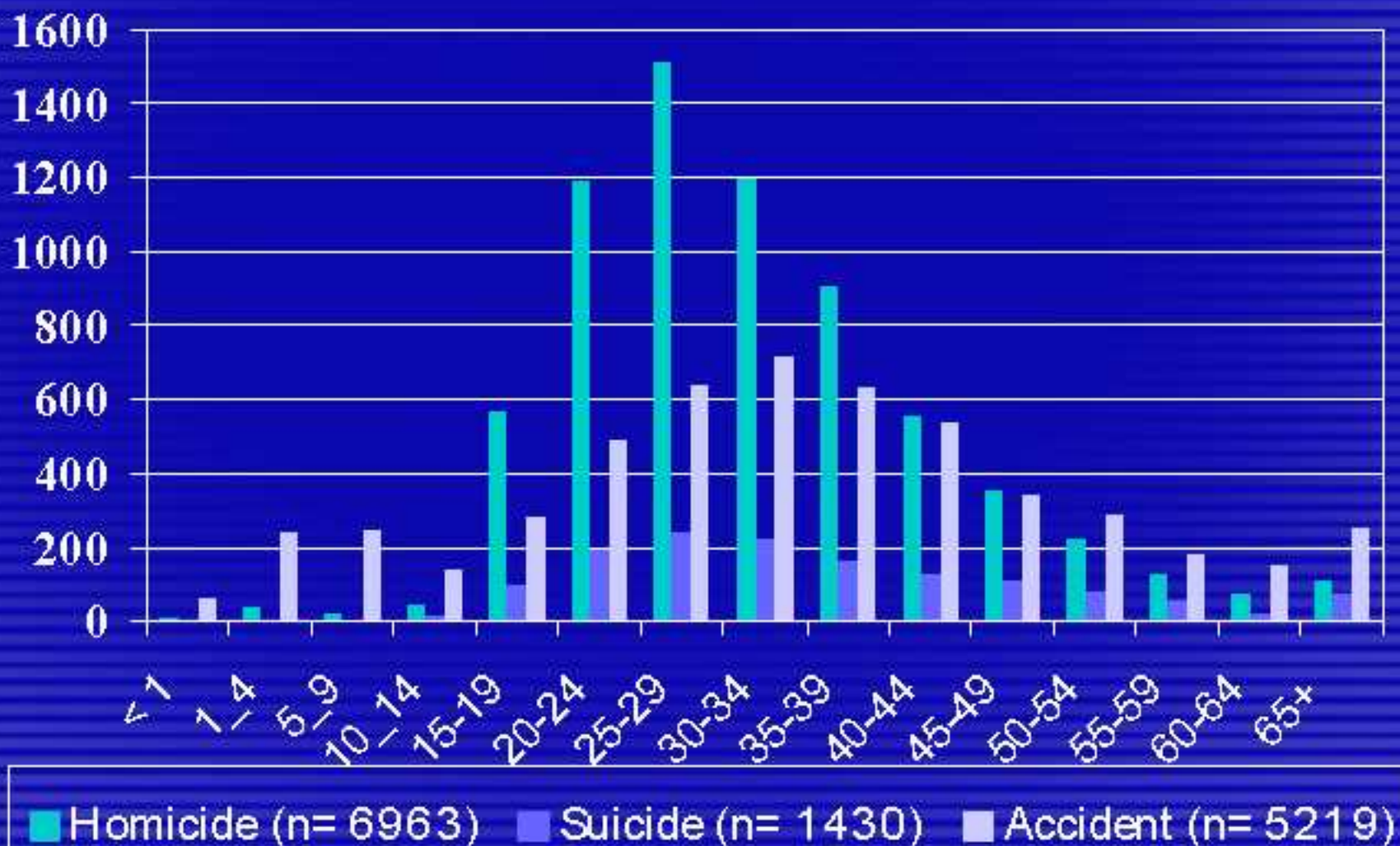


# Top five external causes of death for females (n=3691)

- Firearm
- MV pedestrian
- Burn
- MV passenger
- Sharp



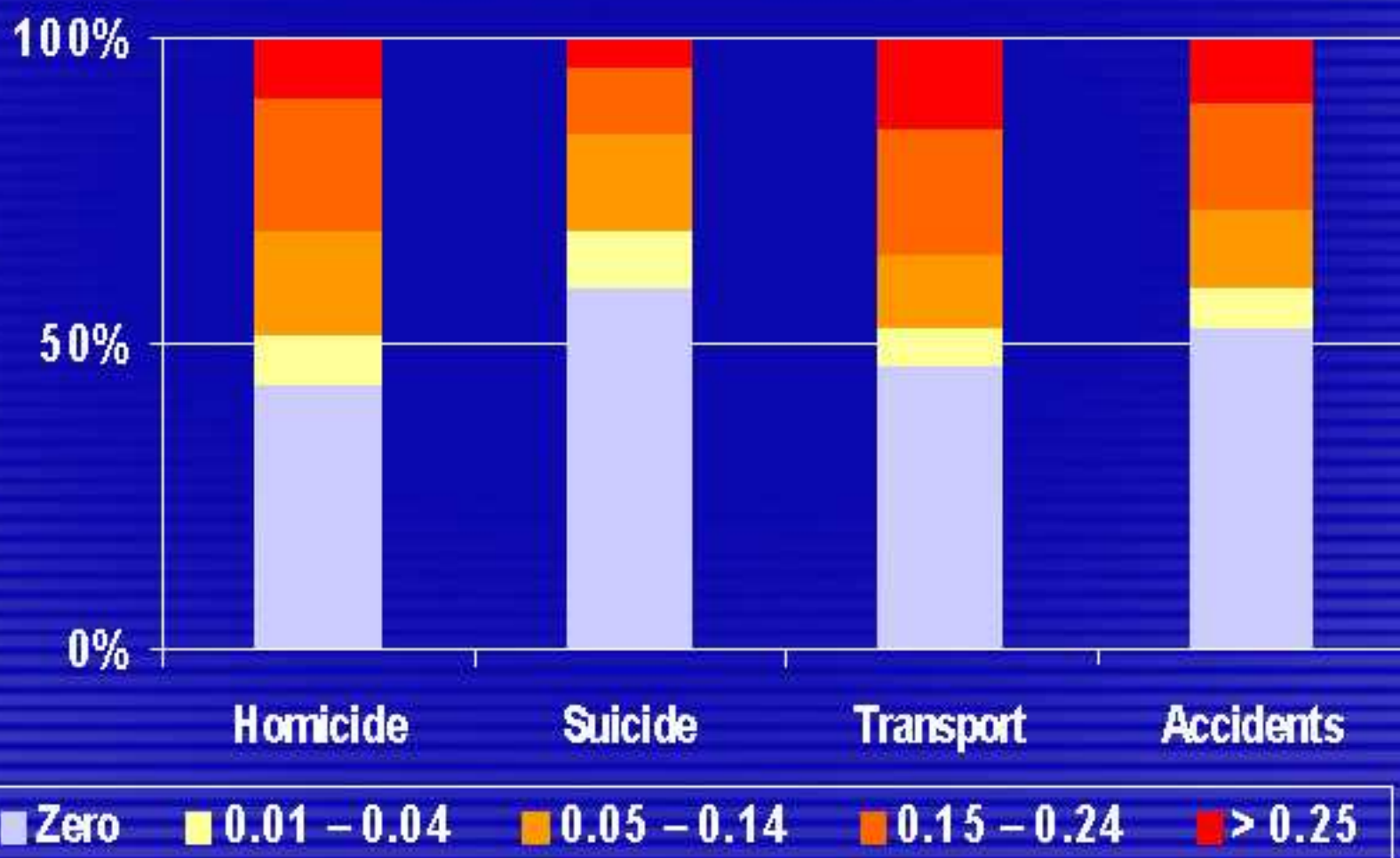
# Manner of death by age



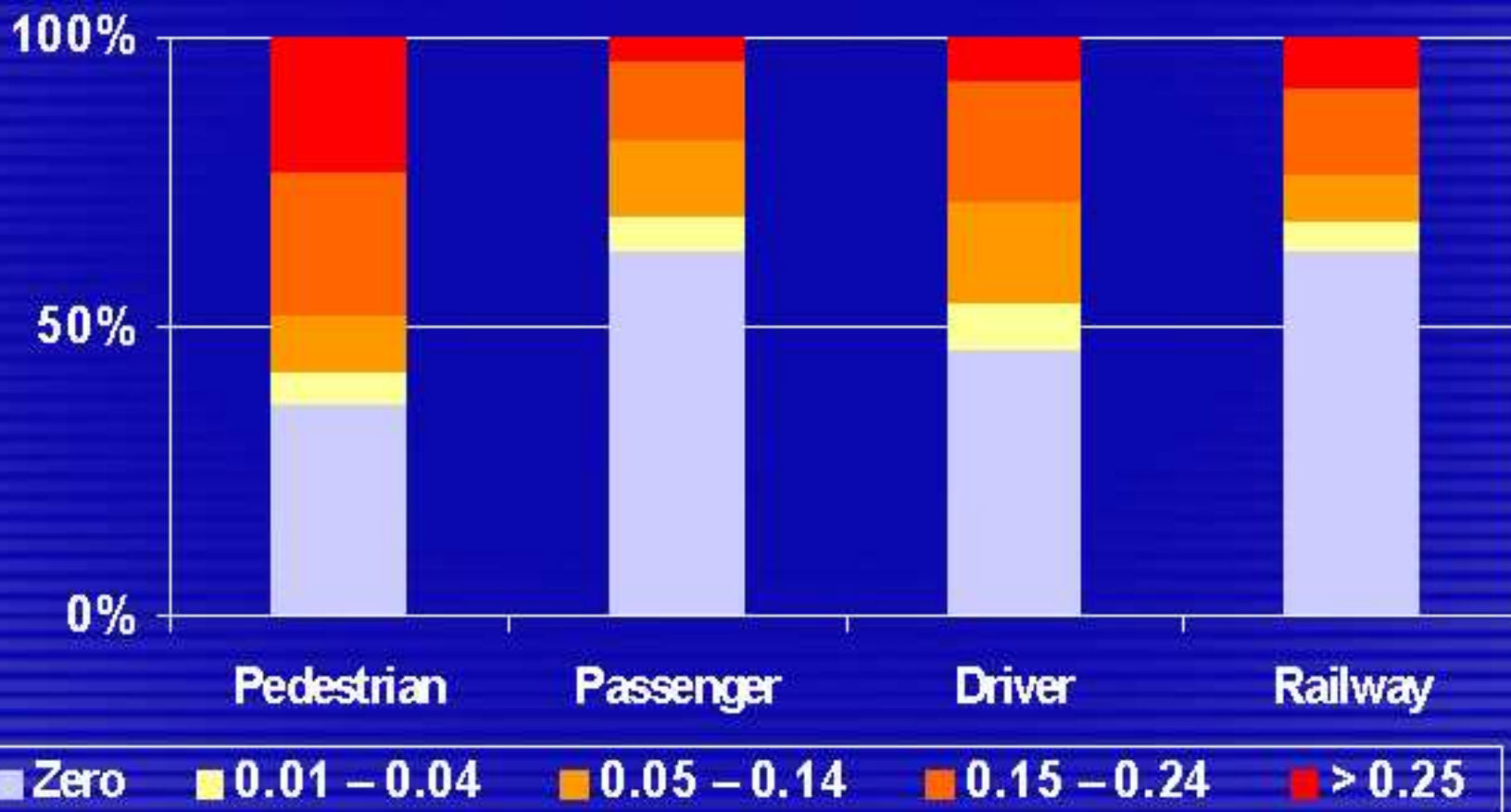
## Leading external cause of death by age

- Age 0 to 4 years - burns
- Age 5 to 14 years - MV pedestrian
- Age 15 years and over - firearms

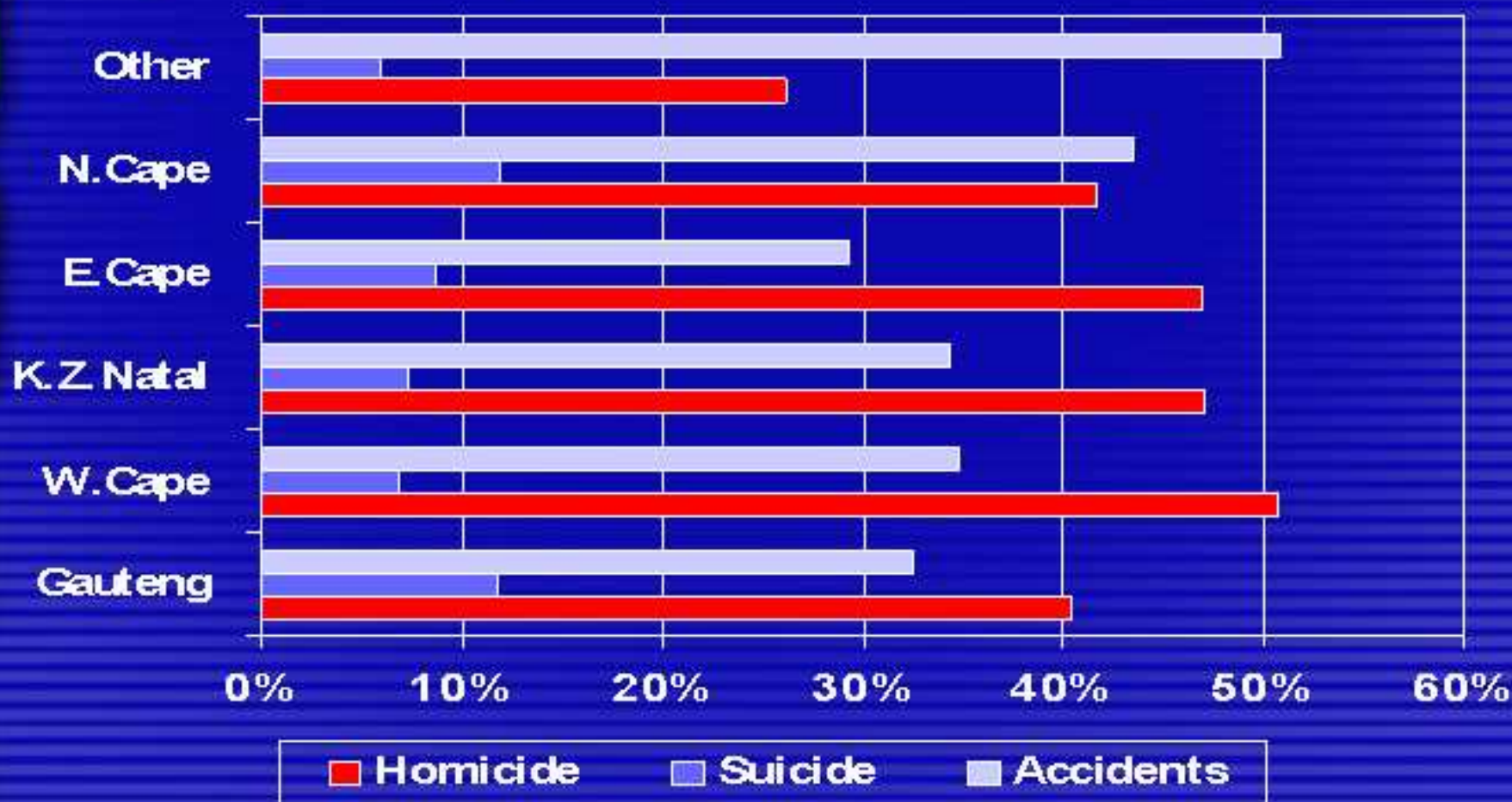
# Manner of death by BAC in g/100ml (n=7574)



# BAC for transport user (n=1968)



# Manner of death by province (n=18831)



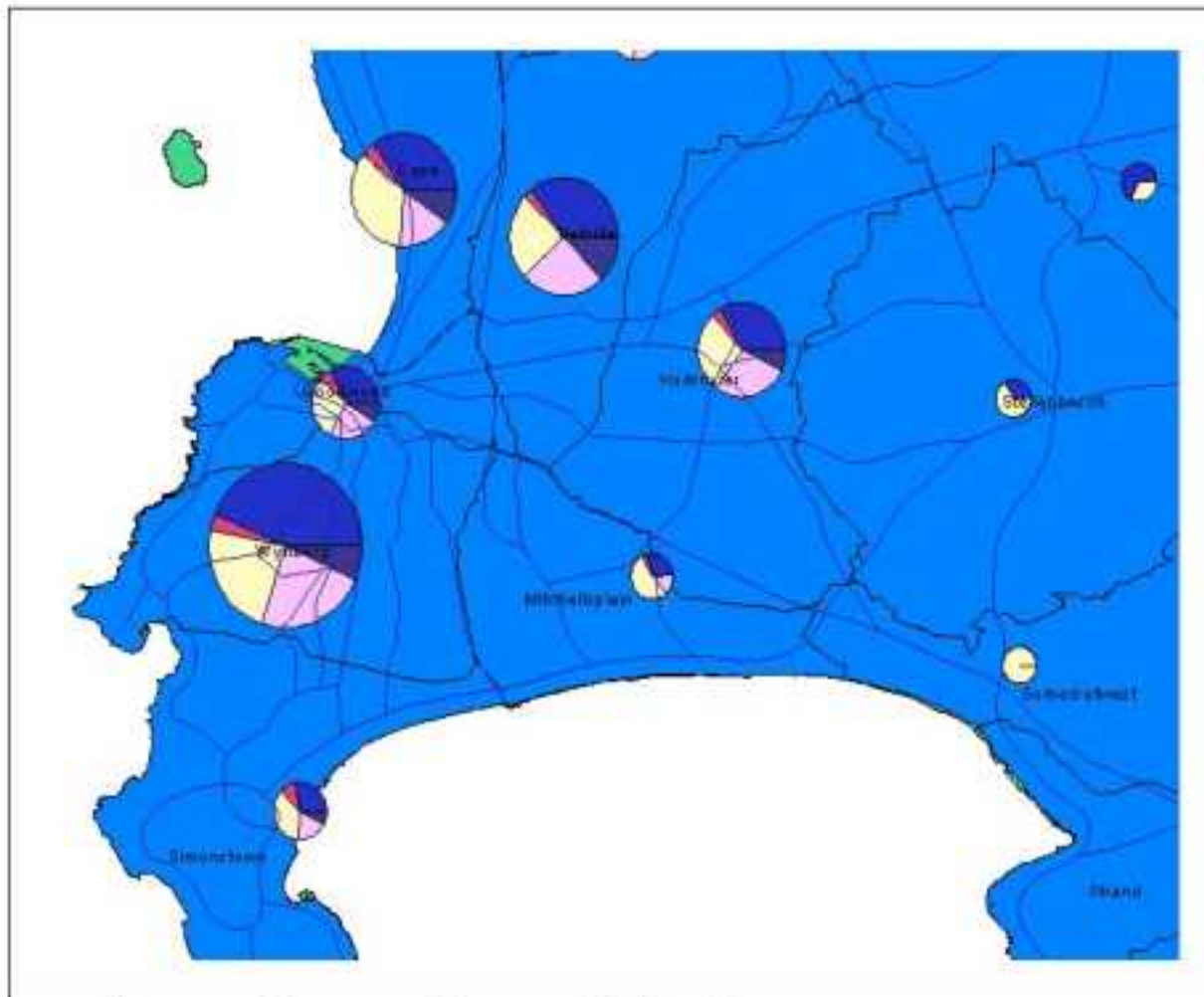
# Inter-city mortality rates per 100000 population

	Cape Town	Port Elizabeth
Non-natural rate	179	228
Homicide	91	107
- firearm homicide	31	29
Suicide	12	18
Transport	43	43

# Annual mortality rates per 100000 population

	1999	2000
Non-natural rate	162	179
Homicide	87	91
- firearm homicide	37	31
Suicide	9	12
Transport	47	43

## Distribution of incidents by manner of death in the two mortuaries at Cape Town



JVC/20

10 0 10 20 Kilometers



# *Thank You*

Special thanks are due to the staff of the mortuaries and forensic laboratories that participated in the compilation of the NIMSS data.

We hope that the NIMSS will eventually play a part in reducing their considerable workload.